



TRAINING AND DIALOGUE PROGRAMS

GENERAL INFORMATION ON

PARTICIPATORY COMMUNITY DEVELOPMENT FOR PRACTITIONERS THROUGH JICA-NGO PARTNERSHIP (A) 集团研修「JICA-NGO 連携による実践的参加型コミュニティ開発 (A)」 *JFY 2010*

<Type: Solution Creation / 類型: 課題解決促進型>

NO. J10-00803/ ID.1080805

Phases in Japan: From July 26, 2010 to September 11, 2010

This information pertains to one of the Training and Dialogue Programs of the Japan International Cooperation Agency (JICA), which shall be implemented as part of the Official Development Assistance of the Government of Japan based on bilateral agreement between both Governments.

I. Concept

Background

Various types of development projects/programs using the community participatory method have been tried and tested in developing countries. In recent years, the important role of local NGOs, which have better understanding of the needs and reality of local communities, has been widely recognized. Donor agencies, as well as local governments in developing countries, are recognizing the importance of working with local NGOs to effectively implement participatory community development projects/programs.

JICA is also seeking ways to strengthen its partnership with local NGOs to implement community development projects/programs in areas such as poverty alleviation, health, agriculture and social forestry.

On the other hand, local NGOs are struggling for acquiring practical and effective techniques for organizing people and managing projects/programs for participatory community development.

For what?

The course aims at facilitating its participants' acquiring ideas and skills for effective implementation of community development projects/programs and at contributing to community empowerment and sustainable and equitable community/ rural development.

For whom?

This program is offered to leaders or project managers of Local/ International NGO or development agency which engage in participatory community development.

How?

The course will be conducted using the participatory training method (PTM), where participants share their own ideas and experiences and learn from others to build the course together. Case studies, demonstrations, presentations, workshops, learning exercises, dialogues, small group discussions and role-playing will be employed for mutual learning and empowerment. Details of the course will be developed by participants and facilitators during the course.

II. Description

1. Title (J-No.): Participatory Community Development For Practitioners Through JICA-NGO Partnership (A) (J10-00803)

2. Period of program

Phase in Japan:

July 26 to September 11, 2010

Due date of Final Report:

March 31, 2011

3. Target Countries:

Argentina, Bhutan, Ecuador, Kenya Papua New Guinea, Timor-Leste

4. Eligible / Target Organization :

This program is designed for the leaders or project managers of / International NGO or development agency which engage in participatory community/ rural development.

5. Total Number of Participants

9 participants

Two (2) allocations: East Timor, Papua New Guinea, Kenya

One (1) allocation: Bhutan, Argentina, Ecuador

- Japanese participants: In addition to above-mentioned 9 overseas participants, a few Japanese participants will join this program through another domestic selection.

- Gender balance: Equal representation of women and men is reserved as a consideration for final selection by JICA Osaka and Kansai NGO Council.

6. Language to be used in this project: English(including English translated from Japanese through interpreters)

7. Program Objective:

Formulating an action plan toward participatory community/ rural development based on the acquired project management method by participants

8. Overall Goal

Participatory community/ rural development led by the residents will be implemented by the parent organization of participants based on the Action plan.

9. Expected Module Output and Contents:

This program consists of the following components. Details on each component are given below:

| (1) Phase in Japan (July 26, 2010 to September 11, 2010) <i>Participants dispatched by the organizations attend the Program implemented in Japan.</i> | | |
|--|--|---|
| Expected Module Output | Subjects/Agendas | Methodology |
| 1) Participants will be able to explain concept of community development | <ul style="list-style-type: none"> - Introduction and Group Building - Nature and function of community - Significance of community development in context of modernization - Presentation of community development which is managed by participants | Discussion, Lecture and Presentation |
| 2) Participants will be able to explain and perform role of outsider on community development | <ul style="list-style-type: none"> - Role of outsider in community development - Facilitation method to promote community development - Philosophy of local wisdom - Sustainable agriculture as combination of local wisdom and modern technology | Workshop, Lecture and Field work |
| 3) Participants will be able to explain diversity-based conflict resolution and linkage method with a wide variety of stake-holders | <ul style="list-style-type: none"> - Diversity, inclusion, gender on participatory community development - Diversity-based conflict resolution to achieve partnership - Analysis of wide variety of stake-holders on community development - Case study of linkage method with community, government and NGO | Workshop, Lecture, Case Study and Fieldwork |
| 4) Participants will be able to formulate an Action plan toward participatory community development | <ul style="list-style-type: none"> - Formulation, Presentation and Discussion of Action plan which is based on output of this program | Presentation and Discussion |

| (2)Final report (in a participant's home country) (Due date : March 31, 2011) <i>Participating organizations produce final outputs by making use of results brought back by participants.</i> | |
|--|---|
| Expected Module Output | Activities |
| To Implement the action plan | Application and implementation of the action plan back in the participant's country and submission of its final report by March 31, 2010. |

III. Conditions and Procedures for Application

1. Expectations for the Participating Organizations:

- (1) This program is designed primarily for organizations that intend to address specific issues or problems identified in their operation. Participating organizations are expected to use the project for those specific purposes.
- (2) This program is enriched with contents and facilitation schemes specially developed in collaboration with relevant prominent organizations in Japan. These special features enable the project to meet specific requirements of applying organizations and effectively facilitate them toward solutions for the issues and problems.
- (3) Participating organizations are also expected to make the best use of the results achieved by their participants in Japan.

2. Nominee Qualifications:

Applying Organizations are expected to select nominees who meet the following qualifications.

(1) Essential Qualifications

1) Current Duties:

- be leaders or project managers of local/national NGO who are engaged in rural/community development projects/programs in their countries.

- be preferably currently engaged in rural/community development with prospects of continuous involvement in the future. Those without current involvement should be expected to be engaged in it upon completion of the training,

2) **Experience in the relevant field:** have at least three (3) years of field experience working for rural/community development projects/programs,

3) be nominated by their government in accordance with the procedures mentioned in "4. Procedure for Application and Selection" below,

4) **Language:** be able to discuss and make reports in English. English listening, speaking and reporting skills are essential for the "open discussion" centered curriculum.

5) **Health:** be in good health, both physically and mentally, to undergo the training, and.

※ Pregnancy : There is higher risk for pregnant women and people with chronic diseases to cause serious medical consequences when infected with the new Influenza A (H1N1) virus according to the past cases.

Under the pandemic situations of the new Influenza, pregnant applicants shall not be accepted for the time being.

And applicants who suffer from chronic diseases, such as respiratory illness, cardiac disease, metabolic disease (diabetes, etc), renal dysfunction and

immune insufficiency (systemic steroid administration, etc), shall not be accepted in principle. However, for those applicants with the chronic diseases, if they and their organizations express strong interest in participating in training programs, JICA shall accept them as an exceptional case after receiving a letter of consent from themselves and their organizations.

Please ask national staffs in JICA office for the details.

6) not be serving in the military.

* **Equal representation of women and men is reserved as a consideration for final selection by JICA Osaka and Kansai NGO Council.**

(2) Recommendable Qualifications

1) Applicants meeting the following conditions are preferred.

- Those who are recommended by partner Japanese NGOs
- Staff of NGOs which currently work in partnership with JICA
- Those who are recommended by JICA field offices

3. Required Documents for Application

(1) Application Form: The Application Form is available at the respective country's JICA office or the Embassy of Japan.

4. Procedure for Application and Selection :

(1) Submitting the Application Documents:

Closing date for application to the JICA Center in JAPAN: **June 11, 2010**

Note: Please confirm the closing date set by the respective country's JICA office or Embassy of Japan of your country to meet the final date in Japan.

(2) Selection:

After receiving the document(s) through due administrative procedures in the respective government, the respective country's JICA office (or Japanese Embassy) shall conduct screenings, and send the documents to the JICA Center in charge in Japan, which organizes this project. Selection shall be made by the JICA Center in consultation with the organizations concerned in Japan based on submitted documents according to qualifications. *The organization with intention to utilize the opportunity of this program will be highly valued in the selection.*

(3) Notice of Acceptance

Notification of results shall be made by the respective country's JICA office (or Embassy of Japan) to the respective Government by **not later than June 30, 2010.**

5. Conditions for Attendance:

- (1)** to observe the schedule of the program,
- (2)** not to change the program subjects or extend the period of stay in Japan,
- (3)** not to bring any members of their family,
- (4)** to return to their home countries at the end of the program in Japan according to the travel schedule designated by JICA,
- (5)** to refrain from engaging in political activities, or any form of employment for profit or gain,
- (6)** to observe the rules and regulations of their place of accommodation and not to change the accommodation designated by JICA.

IV. Administrative Arrangements

1. Organizer:

(1) **Name:** JICA Osaka International Center (JICA OSAKA)

(2) **Contact:** Ms. Megumi KATO (osicctp@jica.go.jp)

2. Implementing Partner:

(1) **Name:** Kansai NGO Council

(2) **Contact:** Ms. Tokie Tanaka (tokie.tanaka@kansaingo.net)

(3) **URL:** <http://www.kansaingo.net>

(4) **Remark:** The Kansai NGO Council is a network of 32 NGOs in Kansai region. Founded in 1987, its mission is empowerment of NGOs through networking.

Activities are as follows:

- Sharing information and experiences among NGOs/ other sectors
- Advocacy on Japan's ODA policy
- Encouraging people's participation in NGOs activities

3. Travel to Japan:

(1) **Air Ticket:** The cost of a round-trip ticket between an international airport designated by JICA and Japan will be borne by JICA.

(2) **Travel Insurance:** Term of Insurance: From arrival to departure in Japan. The traveling time outside Japan shall not be covered.

4. Accommodation in Japan:

JICA will arrange the following accommodations for the participants in Japan:

JICA Osaka International Center (JICA OSAKA)

Address: 25-1 Nishi-Toyokawa-cho, Ibaraki-shi, Osaka 567-0058, Japan

TEL: 81-72-641-6900 FAX: 81-72-641-6910

(where "81" is the country code for Japan, and "72" is the local area code)

If there is no vacancy at JICA OSAKA, JICA will arrange alternative accommodations for the participants. Please refer to facility guide of JICA OSAKA at its URL, <http://www.jica.go.jp/english/contact/domestic/>

5. Expenses:

The following expenses will be provided for the participants by JICA:

(1) Allowances for accommodation, living expenses, outfit, and shipping

(2) Expenses for study tours (basically in the form of train tickets).

(3) Free medical care for participants who become ill after arriving in Japan (costs related to pre-existing illness, pregnancy, or dental treatment are not included)

(4) Expenses for program implementation, including materials

For more details, please see p. 9-16 of the brochure for participants titled "KENSU-IN GUIDE BOOK," which will be given to the selected participants before (or at the time of) the pre-departure orientation.

6. Pre-departure Orientation:

A pre-departure orientation will be held at the respective country's JICA office (or Japanese Embassy), to provide participants with details on travel to Japan, conditions of the workshop, and other matters.

V. Other Information

1. DEVELOPMENT EDUCATION PROGRAMME:

The purposes of the International Cooperation Program of JICA are not only to share Japanese knowledge, experience and ideas with participating countries, but also to promote mutual understanding between participating countries and Japan. The Japanese government recognizes the importance of citizen participation in its International Cooperation Program and has thus recently placed a greater emphasis on this aspect of the Program. With this objective, JICA collaborates with schools and local governments as well as various kinds of community-based organizations to expose the members to the rich heritages of foreign cultures represented by participants, as a precious first step to promote international exchange and cooperation.

To provide a stronger foundation for these activities, JICA has been conducting a Development Education Program for Japanese citizens in all training courses and seminars it offers. Participants are encouraged to bring any materials necessary to introduce the cultural heritages and/or natural histories of their own countries, such as national costumes, musical instruments, works of art, photographs, and so on. This program is scheduled to start on the first Thursday following the participants' arrival in Japan.

2. Belongings

It is recommended to bring a medium-sized bag or suitcase for a few days fieldwork.

For Your Reference

JICA and Capacity Development

The key concept underpinning JICA operations since its establishment in 1974 has been the conviction that “capacity development” is central to the socioeconomic development of any country, regardless of the specific operational scheme one may be undertaking, i.e. expert assignments, development projects, development study projects, training programs, JOCV programs, etc.

Within this wide range of programs, Training Programs have long occupied an important place in JICA operations. Conducted in Japan, they provide partner countries with opportunities to acquire practical knowledge accumulated in Japanese society. Participants dispatched by partner countries might find useful knowledge and re-create their own knowledge for enhancement of their own capacity or that of the organization and society to which they belong.

About 460 pre-organized programs cover a wide range of professional fields, ranging from education, health, infrastructure, energy, trade and finance, to agriculture, rural development, gender mainstreaming, and environmental protection. A variety of programs and are being customized to address the specific needs of different target organizations, such as policy-making organizations, service provision organizations, as well as research and academic institutions. Some programs are organized to target a certain group of countries with similar developmental challenges.

Japanese Development Experience

Japan was the first non-Western country to successfully modernize its society and industrialize its economy. At the core of this process, which started more than 140 years ago, was the “*adopt and adapt*” concept by which a wide range of appropriate skills and knowledge have been imported from developed countries; these skills and knowledge have been adapted and/or improved using local skills, knowledge and initiatives. They finally became internalized in Japanese society to suit its local needs and conditions.

From engineering technology to production management methods, most of the know-how that has enabled Japan to become what it is today has emanated from this “*adoption and adaptation*” process, which, of course, has been accompanied by countless failures and errors behind the success stories. We presume that such experiences, both successful and unsuccessful, will be useful to our partners who are trying to address the challenges currently faced by developing countries.

However, it is rather challenging to share with our partners this whole body of Japan’s developmental experience. This difficulty has to do, in part, with the challenge of explaining a body of “tacit knowledge,” a type of knowledge that cannot fully be expressed in words or numbers. Adding to this difficulty are the social and cultural systems of Japan that vastly differ from those of other Western industrialized countries, and hence still remain unfamiliar to many partner countries. Simply stated, coming to Japan might be one way of overcoming such a cultural gap.

JICA, therefore, would like to invite as many leaders of partner countries as possible to come and visit us, to mingle with the Japanese people, and witness the advantages as well as the disadvantages of Japanese systems, so that integration of their findings might help them reach their developmental objectives.



Welcome to JICA Osaka

Osaka International Center of Japan International Cooperation Agency (JICA Osaka) extends a hearty welcome to all JICA participants.

1. Location of the center in the Kansai region

JICA Osaka is located in Ibaraki City, Osaka prefecture, in the heart of the Kansai region. Ibaraki lies close to the ancient cultural centers of Kyoto and Nara, and to the commercial, industrial and economic center of Osaka, and the city of Kobe.

2. Orientation Program & Japanese Language Course

(1) The four days after arrival at JICA Osaka are dedicated to an orientation program, during which participants are introduced to JICA Osaka and its facilities, attend lectures on Japan's economy, society and culture, and participate in an international exchange program with local communities.

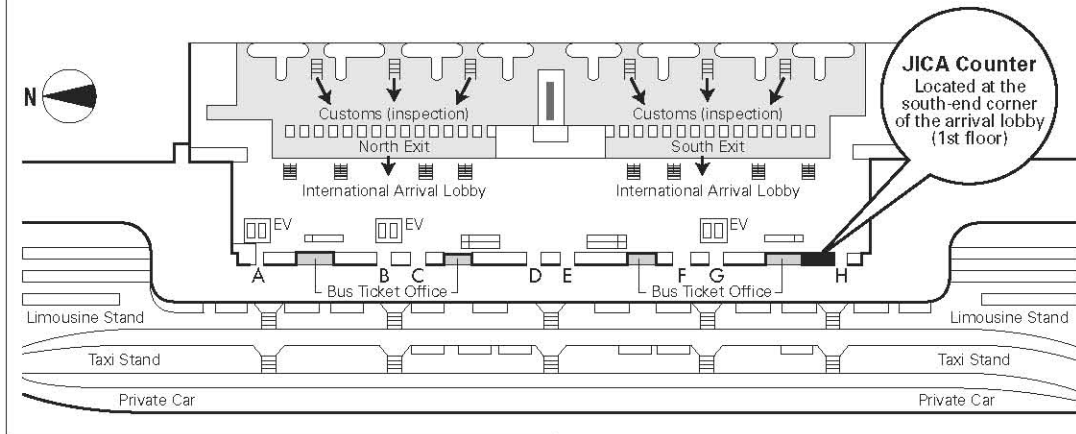
(2) It is desirable that participants acquire basic Japanese daily conversation for use in communication with training institution personnel and in other situations outside the scope of their technical training. JICA Osaka therefore offers:

- ① an intensive Japanese language course as an integral part of the training program in designated courses
- ② an optional Japanese language course held in the evenings

3. Recreational Program

Occasionally, JICA Osaka, in concert with community groups, organizes a program of recreational activities and exchange events, including introductions to flower arrangement, tea ceremony and visits to Japanese homes.

Map of JICA Counter in Kansai International Airport (KIX)



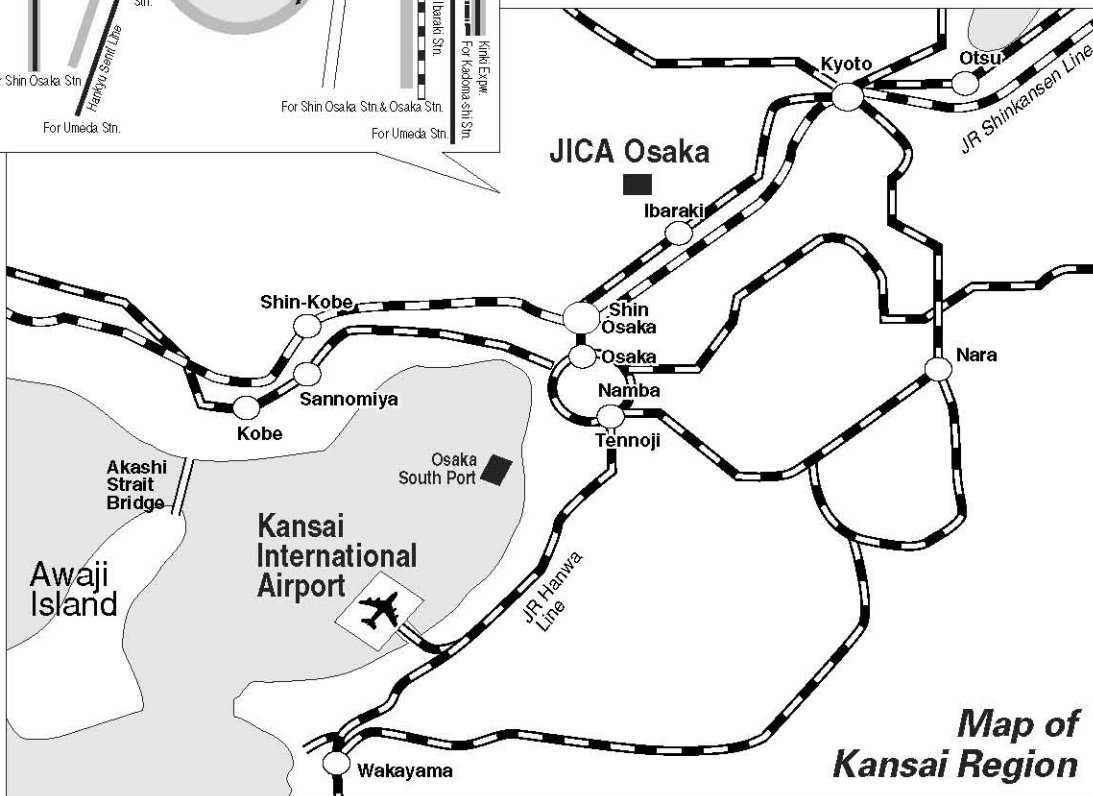
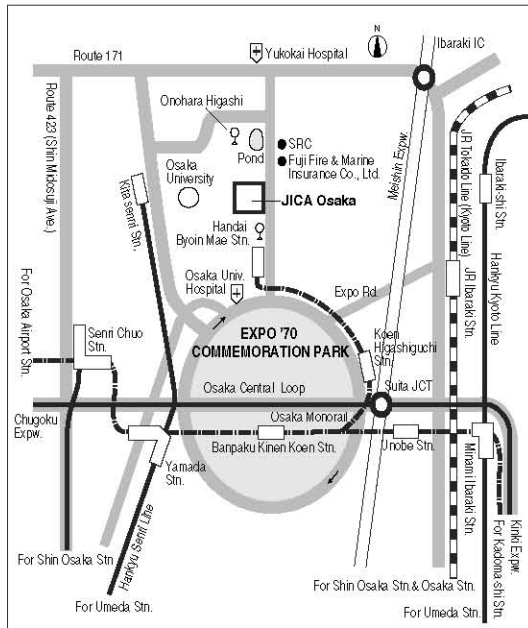
Upon arrival, participants should follow the procedure below:

1. Ride on Wing Shuttle (red elevated tram).
2. Pass through Immigration.
3. Collect baggage and pass through Customs Inspection.
4. Go to the JICA Counter located at the south-end corner of the arrival lobby (1st floor).

The staff at the JICA Counter will provide participants with a limousine bus ticket to Osaka Station (alight at Hotel New Hankyu).

At Osaka Station, a representative of the travel agency designated by JICA will meet the participant. The participant will be taken to JICA Osaka by taxi (with a taxi ticket), which takes approximately 30 minutes.

Map of the JICA Osaka Vicinity



Map of Kansai Region



CORRESPONDENCE

For enquiries and further information, please contact the JICA office or the Embassy of Japan. Further, address correspondence to:

**Program TeamIII, Osaka International Centre (JICA Osaka)
Japan International Cooperation Agency (JICA)**

Address: 25-1 Nishi-Toyokawa-cho, Ibaraki-shi, Osaka 567-0058, Japan

URL: <http://www.jica.go.jp/branch/osic/english>

Tel. : 81 (*) -72 (**) -641-6900 Fax. : 81 (*) -72 (**) -641-6910

(*): country code for Japan (**) : area code for Ibaraki