



TRAINING AND DIALOGUE PROGRAMS

GENERAL INFORMATION ON

**Group training course
“Enhancement of Local Government Administration and
Public Services
(Participatory Local Development)”
集団研修「地方自治体行政強化(参加型地域開発)」
JFY 2010**

**<Type: Solution Creation/ 類型: 課題解決促進型>
ID 1080994 NO. J10-00822**

**From May, 2010 to February, 2011
Phase in Japan : From July 5 , 2010 to August 28, 2010**

This information pertains to one of the Training and Dialogue Programs of the Japan International Cooperation Agency (JICA), which shall be implemented as part of the Official Development Assistance of the Government of Japan based on bilateral agreement between both Governments.

I. Concept

Background

The past two decades have seen a gathering momentum in favor of devolving the powers of government from central to local authorities. In many countries in Asia, Africa and Latin America, decentralization emerged as a direct response to discredited, heavily centralized states. Also, these decentralizing trends associated with notions of good governance, participatory development and capacity development have accelerated over the course of the 1990s in both developed and developing countries.

One of the essences of decentralization is to improve the provision of public services in terms of effectiveness of delivery, efficiency, access, equity and pro-poor impact. Decentralization aims to deliver the services more closely with the needs of the community by locating the providers of public services closer to the people. Improvements in service delivery cannot be separated from issues of elected representation, community participation, local government accountability and local capacity. Contrarily, the reality in public services in developing countries needs to be much improved to reach these anticipations.

Under these circumstances, this JICA training course aims to strengthen the capability of human resources dealing with policy-making of participatory local development and community participation in developing countries. This program is designed to contribute the realization of importance on participatory local development and community participation.

For what?

To achieve the betterment and improvement in livelihood / welfare of the people concerned through participants' initiatives that derives from the implementation of an Action Plan for participatory local development, which appropriately considers situation and concern of stakeholders such as a community people and local governments.

For whom?

This program is offered to

- (1) Policy makers and program / project implementation in charge of local and rural development in Local governments/National government
- (2) Researchers and practitioners in other institutes, which is in charge of policy-making and program / project implementation for local and rural development

Counterparts of Japan's bilateral cooperation program (including Technical Cooperation Projects, Japan Overseas Volunteers, or etc.) are highly prioritized.

How?

Participants will design and implement a feasible and effective Action Plan based on the

knowledge and skills as follows;

- (1) Participatory Local Societal Development (PLSD)
- (2) Project Cycle Management (PCM),
- (3) Observation and dialogue with Japanese case studies on participatory local development
- (4) Concretization of realistic Action Plans for participatory local development with outputs in (1), (2), and (3)

II. Description

1. Title (J-No.10-00822): Group training course “Enhancement Local Government Administration and Public Services (Participatory Local Development)”

2. Period of program

Duration of whole program:	May 2010 to Feb 2011
Preliminary Phase: (in a participant's home country)	May 2010 to June 2010
Core Phase in Japan:	July 5 to August 28, 2010
Finalization Phase: (in a participant's home country)	Sep, 2010 to Feb, 2011

***All the participants are required to participate in the whole program including Ramadan period.**

3. Target Regions or Countries (14 countries):

Argentina, Cambodia, Ghana, Laos, Maldives , Moldova, Papua New Guinea, Nicaragua, Solomon, Sudan, Tanzania, Timor-Leste, Thailand, Uganda,

4. Overall Goal:

Participatory community development activities will be promoted in participating organizations

5. Objective:

(1) Program objective

The capability of participating organizations to facilitate needs-based community development with local community participation will be enhanced.

(2)Expected Module Output:

(2)-1 To achieve the Program Objective, participants are expected to achieve the following Expected Module Outputs in Japan

- (1) To understand the theory and method of Participatory Local Societal Development (PLSD) and Project Cycle Management (PCM),
- (2) To understand the Japanese reality of the role of local government in local

- development and capture the essence of participatory local development
- (3) To design realistic Action Plans for participatory local development with outputs in (1) and (2).

II. In participants' country, it is also expected that

- (1) **the Action Plan** created in this program is approved and implemented by the participant and the organization concerned within planned duration.
- (2) For the final goal of this course, Progress report is submitted by the end of Feb 2011

6. Eligible / Target Organization :

- (1) Local governments/National government sections in charge of local and rural development
- (2) Institutes, which is in charge of policy-making and program / project implementation for local and rural development

7. Total Number of Participants : 17

8. Language to be used in this project : English (Including Japanese with English interpretation.)

9. Contents:

This program consists of the following components. Details on each component are given below:

(1) Preliminary Phase in a participant's home country (May 2010 to June 2010) <i>Participating organizations make required preparation for the Program in the respective country.</i>	
Modules	Activities
Consultation Proposal Plan	<ul style="list-style-type: none"> - Preparation of Proposal Plan(*See VI "Annex" in detail) and collection of necessary country, sub-national or local information and data. - Creation of mutual understanding of Proposal Plan inside a participating organization through a series of discussions
of	<ul style="list-style-type: none"> - * If possible, participants would be requested to share the idea of Proposal Plan and ask for advice from the organizations concerned in Japan by connecting with JICA –Net system in JICA office, before starting the core program in Japan. It is planned to be held in the middle of June. - The date of the TV-net meeting is going to be held between June 7th~June18th

(2) Core Phase in Japan (July 5, 2010 to August 28, 2010) <i>Participants dispatched by the organizations attend the Program implemented in Japan.</i>		
Modules	Subjects/Agendas	Methodology
1) Actual conditions of participant's countries	Country Report Presentation	Presentation
2) Theory for Participatory Development	Theory for Participatory Local Societal Development (PLSD) 1	Lecture
	Theory for Participatory Local Societal Development (PLSD) 2	Lecture
	Observation trip for agrarian rural villages	Field Survey
	Follow-up 1: Theory of PLSD	Lecture
	Follow-up 2: Theory of PLSD	Lecture
3) Participatory Development & Local Government in Urban Area	Urban development & Local Governments	Lecture
	Urban Development & Roles of Kyoto City Government	Lecture
	Case Study 1 (Town Development with Citizen Participation and Local Community, Sustainable Development in Cooperation with University)	Field Survey
	Case Study 2 (Local Network Supporting for Small-scale Industries with University in Kyoto)	Field Survey
	Integration Workshop 1	Workshop
4) Participatory Development & Local Government in Rural Area	Changes in Rural Communities with Economic Development in Japan	Lecture
	Agricultural/Rural Development & Roles of Kyoto Prefecture Government	Lecture
	Case Study 3 (Agricultural Development in Kyoto: Rice, Vegetables)	Field Survey
	Case Study 4 (Rural Development in Kyoto: Community Agri., Green Tourism)	Field Survey
	Integration Workshop 2	Workshop
	Case study 5 (Hiroshima)	Field Survey
	Case study 6 (Hiroshima)	Field Survey
5) Theory and Practice for Participatory Development Planning	Theory & Practice of Logical Framework (PCM) 1	Workshop
	Theory & Practice of Logical Framework (PCM) 2	Workshop
	Theory & Practice of Logical Framework (PCM) 3	Workshop
6) Program	Action Plan Workshop	Workshop

Integration	Symposium on Local Government Administration for Participatory Development	Presentation
	Course Evaluation / Closing Ceremony	Meeting

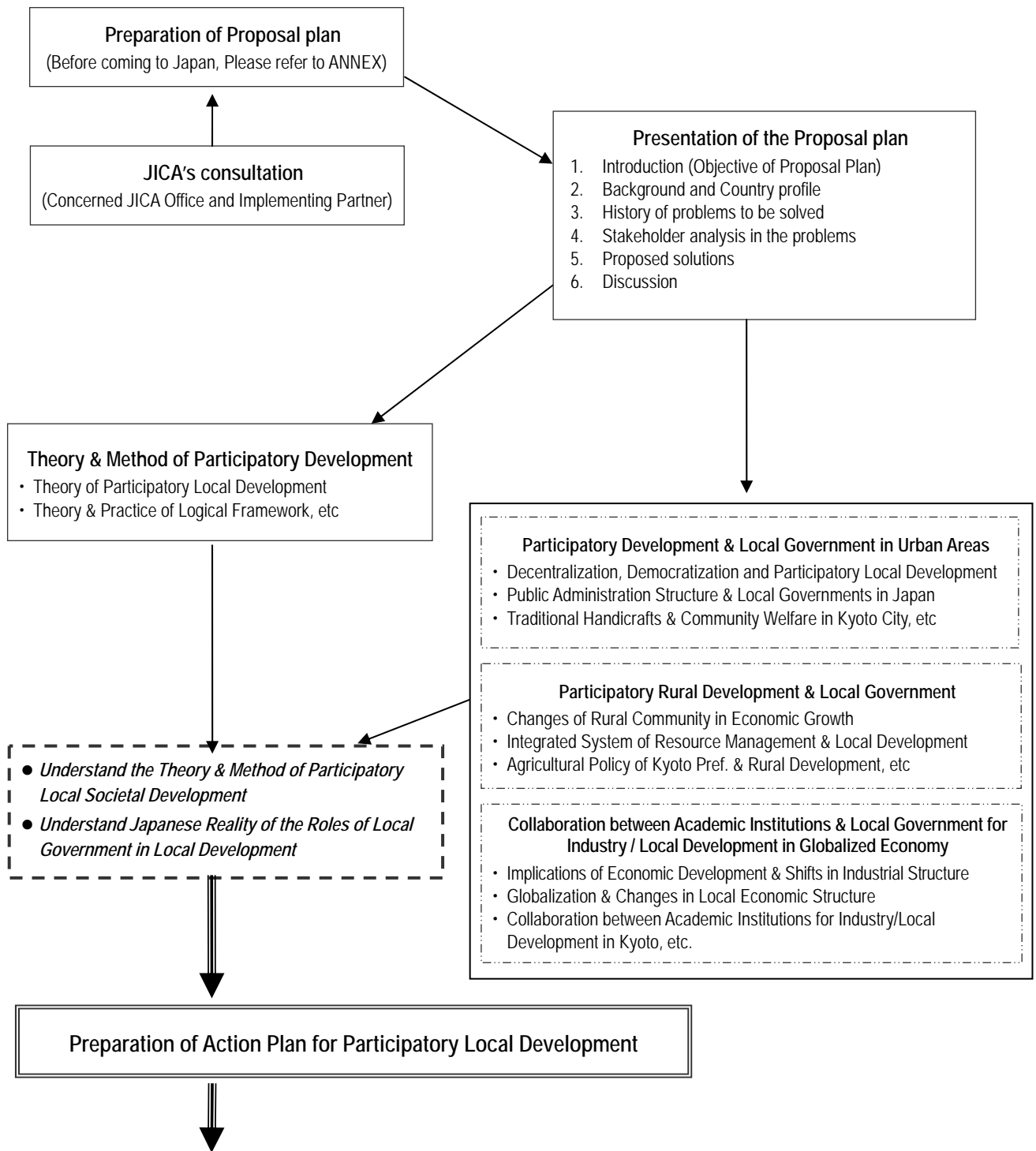
(3) Finalization Phase in a participant's home country

Participating organizations produce final outputs by making use of results brought back by participants. This phase marks the end of the Program.

Modules	Activities
Finalization and Implementation of the <u>action plan</u> and submission of the <u>final report</u>	Application and implementation of the action plan back in the participant's country and submission of the progress report by the end of Feb 2011. Participating organizations are required to submit the final report for the action plan at the end of the core phase.

***In case the final report is not submitted from a participating organization, the acceptance from the organization shall be suspended.**

<Structure of the program>



Final Phase (activities in home country)

Participating organizations are expected to finalize and implement the Action Plan and report on progress within planned duration.

Training Schedule: Please refer to the schedule of JFY2009 (ANNEX II)

III. Conditions and Procedures for Application

1. Expectations for the Participating Organizations:

- (1) This program is designed primarily for organizations that intend to address specific issues or problems identified in their operation. Participating organizations are expected to use the project for those specific purposes.
- (2) This program is enriched with contents and facilitation schemes specially developed in collaboration with relevant prominent organizations in Japan. These special features enable the project to meet specific requirements of applying organizations and effectively facilitate them toward solutions for the issues and problems.
- (3) As this program is designed to facilitate organizations to come up with concrete solutions for their issues, participating organizations are expected to make due preparation before dispatching their participants to Japan by carrying out the activities of the Preliminary Phase described in section II -9 -(1), as preparing for the Proposal Plan.
- (4) Participating organizations are also expected to make the best use of the results achieved by their participants in Japan by carrying out the activities of the Finalization Phase described in section II -9-(3), as practicing the Action Plan.

2. Nominee Qualifications:

Applying Organizations are expected to select nominees who meet the following qualifications.

*Please note that nominees would not necessarily be employed by the applying organizations, as long as they are selected officially by the organizations for their specific purposes. However, the nominees must be either person who are engaged in the said field or directly related to program subject.

(1) Essential Qualifications

- 1) Specialists and/or officials dealing with policy-making for local development with more than 3 years experience,
- 2) Educational Background: be a graduate of university
- 3) Language: have a competent command of spoken and written English which is equal to TOEFL CBT 250 or more (This workshop includes active participation in discussions, action plan (interim report) development, thus requires high competence of English ability. Please attach an official certificate for English ability such as TOEFL, TOEIC etc, if possible)
- 4) Health: must be in good health, both physically and mentally, to participate in the Program in Japan. Pregnancy is regarded as disqualifying condition, since this training contains several practices, visits and travels which are too hard for the pregnant.

5) Must not be serving any form of military service.

Recommendable Qualifications

Age: be under forty (40) years of age,

3. Required Documents for Application

(1) **Application Form:** The Application Form is attached to this General Information.

(2) **Nominee's English Score Sheet:** to be submitted with the application form. If you have any official documentation of English ability (e.g., TOEFL, TOEIC, IELTS), please attach it (or a copy) to the application form.

(3) **Proposal Plan:** to be submitted with the application form. Please refer to the ANNEX VI of this General Information, and submit it **along with the application Form.**

4. Procedure for Application and Selection :

(1) Submitting the Application Documents:

Closing date for application to the JICA Center in JAPAN: **April 30, 2010**

Note: Please confirm the closing date set by the respective country's JICA office or Embassy of Japan of your country to meet the final date in Japan.

(2) Selection:

After receiving the document(s) through due administrative procedures in the respective government, the respective country's JICA office (or Japanese Embassy) shall conduct screenings, and send the documents to the JICA Center in charge in Japan, which organizes this project. Selection shall be made by the JICA Center in consultation with the organizations concerned in Japan (Ryukoku University) based on submitted documents according to qualifications.

Note: The organization with a detailed plan to utilize the opportunity of this program will be highly valued in the selection.

(3) Notice of Acceptance

Notification of results shall be made by the respective country's JICA office (or Embassy of Japan) to the respective Government by **not later than May 14, 2010.**

5. Conditions for Attendance:

(1) to observe the schedule of the program,

(2) not to change the program subjects or extend the period of stay in Japan,

(3) not to bring any members of their family,

(4) to return to their home countries at the end of the program in Japan according to the travel schedule designated by JICA,

(5) to refrain from engaging in political activities, or any form of employment for

profit or gain,

- (6)** to observe the rules and regulations of their place of accommodation and not to change the accommodation designated by JICA, and
- (7)** to participate the whole program including a preparatory phase prior to the program in Japan. Applying organizations, after receiving notice of acceptance for their nominees, are expected to carry out the actions described in section II -9(1).

IV. Administrative Arrangements

1. Organizer:

(1) **Name:** JICA Osaka

(2) **Contact:** Ms. KINASHI, Yoko (Kianshi.Yoko@jica.go.jp)
Training Program Division, JICA Osaka

2. Implementing Partner:

(1) **Name:** Ryukoku University, Graduate School of Economics

<http://www.ryukoku.ac.jp/english/english1/>

(2) **Contact :** Professor KAWAMURA, Yoshio

(3) **Remark:** The Graduate school of economics, Ryukoku University has been implementing and supporting JICA training course and project in local governance and development over the last ten years. Internationally, the institution has accumulated various and profound knowledge and experience through these JICA programs and other independent activities. Moreover, the institution has deep and strong relationship with local governments and community based organization in western region in Japan. This course consists of above mentioned human networks and academic fruits.

3. Travel to Japan:

(1) **Air Ticket:** The cost of a round-trip ticket between an international airport designated by JICA and Japan will be borne by JICA.

(2) **Travel Insurance:** Term of Insurance: From arrival to departure in Japan. *the traveling time outside Japan shall not be covered.

4. Accommodation in Japan:

JICA will arrange the following accommodations for the participants in Japan:

JICA Centre international de Osaka (JICA Osaka) Adresse : 25-1 Nishi-Toyokawa-cho, Ibaraki-shi, Osaka 567-0058, Japan TEL : 81(*)-72(**)-641-6900 FAX : 81(*)-72(**)-641-6910 (where "81" is the country code for Japan, and "3" is the local area code)
--

If there is no vacancy at JICA Osaka, JICA will arrange alternative accommodations for the participants. Please refer to facility guide of JICA Osaka at its URL, <http://www.jica.go.jp/branch/osic/english/training/index.html>

5. Expenses:

The following expenses will be provided for the participants by JICA:

(1) Allowances for accommodation, living expenses, outfit, and shipping

(2) Expenses for study tours (basically in the form of train tickets).

(3) Free medical care for participants who become ill after arriving in Japan (costs related to pre-existing illness, pregnancy, or dental treatment are not included)

(4) Expenses for program implementation, including materials

For more details, please see p. 9-16 of the brochure for participants titled "KENSU-IN GUIDE BOOK," which will be given to the selected participants before (or at the time of) the pre-departure orientation.

6. Pre-departure Orientation:

A pre-departure orientation will be held at the respective country's JICA office (or Japanese Embassy), to provide participants with details on travel to Japan, conditions of the workshop, and other matters.

V. Other Information

1. Proposal Plan

At the beginning of the training course, each of participants will be requested to make a presentation on his/her Proposal Plan. (See II -9. <Contents of the program> and VI ANNEX)

a. Purpose of the Proposal Plan:

The purposes of the Proposal Plan are,

- (1) To identify problems to be solved and propose practical solutions in the local governance and development in a participant's country and
- (2) To share these problems among the participants to improve and review your plan.

* This Proposal Plan will become a base for the Action Plan.

b. Contents of the Presentation:

One hour is allocated for each presentation. Each presentation is comprised of the below components;

1. Introduction (Objective of Proposal Plan) – 5 minutes –
2. Background and Country profile – 10 minutes –
3. History of problems to be solved – 5 minutes –
4. Stakeholder analysis in the problems – 10 minutes –
5. Proposed solutions – 5 minutes –
6. Discussion – 25 minutes –

Before the presentation, participants should be distributed handouts on the brief country outline and the description on general government system focusing on local administrations to other participants.

The presentation should be made under the assumption that nobody knows plan and the country. As a medium for presentation, **power-point** would be recommended as well as hard-printed handout/paper.

2. Action Plan

Each of participating organization is required to make an Action Plan for participatory local development at the end of the training course (September, 2010). The participants will make a draft of the Action Plan as a representative of the organization in the training held in Japan.

a. Purpose of Action Plan:

The purpose of Action Plan is, first, to analyze and describe the problems to be solved appropriately and precisely and second, to identify and elaborate the practical and comprehensive activities or what can be done by the participating organizations to solve these problems.

b. Contents of Action Plan:

The Action Plan should include the problems at the following three aspects:

- (1) Comprehensive analysis to observe environments and stakeholders around the problems is implemented.
- (2) The structure of the clear hypotheses of relation between problems and causal factors should be elaborated.
- (3) The practical actions to solve the problems should be specified and proposed in order of priority.

For these, the participants are expected to integrate their knowledge and skills with the experiences they gained through the field observations, workshops and lectures in the training course. The below table of contents is an example of Action Plan.

(Example of table of the contents for Action Plan)

1. Necessity and Objective of Action Plan
2. Current / Historical Background of Action Plan (social, cultural, economical, political, statistical and administrative information with qualitative data)
3. Stakeholder analysis in Action Plan (Central government, Local government, Local community or University etc)
4. Linkage between Your organization and Action Plan
5. Project Design Matrix for Action Plan or List of Detailed Activities (with detailed explanation / description)
6. Lessons from this course
7. References

c. Form of Presentation:

Thirty minutes are allocated for each presentation. This presentation divided by two parts: the first twenty minutes for the presentation and the following ten minutes for discussion among the participants. As a medium for presentation, power-point or over-head projector should be used as well as hard-printed handout/paper.

VI. ANNEX: *Personal Profile and Proposal Plan*

I . Organization and Personal Profile

(*Please submit with Proposal Plan)

1. Name of Applicant (Country):
2. Organization:

Provide an organizational chart of the department which you belong to and a brief explanation about the duties which are allotted to you.

(Attach separately on A4-size paper.)

3. Job History (List all positions held since graduating from university.)
4. General Government System in Applicant's Country:

Focus on local administration and clarify the inter-relationship between local government and local society (including community and industry), and between local government and central government.

II . Proposal plan for participatory development and local government functions in your country

(*At least 10 pages on double-spaced A4-size paper, attached separately)

This proposal plan is to include the following information;

1. Title of Proposal Plan (The title should briefly explain what you will do in your Proposal Plan)
2. Necessity, Objective and Problems to be solved in Proposal Plan
3. Background and Country profile of Proposal Plan (social, cultural, economical, political, statistical and administrative information)
4. Implementation organization and Schedule of implementation
5. Past experiences and activities related to Proposal Plan (with qualitative data)
6. Stakeholder analysis in the problems
7. Anticipated solutions (country, sub-national or local information will be important)
 - a. Inputs (Human resources, Financial resources and Necessary technical information)
 - b. Decision making and coordination to implement the solutions

c. Activities and Expected Outputs

d. Limitation of solutions

8. Similar activities by other organizations

9. References

Training Program (JFY 2009 For your reference.)

Course : Enhancement of Local Government Administration and Public Services (Participatory Local Development)

Training Period : January 11, 2010 - March 06, 2010

Date	Time	Type	Subject	Lecturer or Organization		Place to Visit	Place to Stay & Phone No.
				Name	Position & Organization		
1st Week Weekly Target: JICA General Orientation							
1/11	MON		Arrival in Japan				JICA OSAKA 072-641-6900
12	TUE	9:40-16:30	B Briefing Program Orientation	JICE JICA		JICA OSAKA (Briefing Room) (Seminar Room 10)	"
13	WED	9:40-17:15	General Orientation	JICE		JICA OSAKA (Briefing Room)	"
14	THU		Exchange Program	JICA		Takatsuki City, Osaka Prefecture	"
15	FRI	9:45-17:40	General Orientation Return Flight Meeting	JICE KSA		JICA OSAKA (Briefing Room)	"
16	SAT		N				"
17	SUN		N				"
2nd Week Weekly Target: Formation of Conceptual Framework (Participatory Development and Local Administration)							
1/18	MON	10:00-16:00	B/L Orientation : Subjects and Methodology	Mr. Kawamura Mr. Kawakita	Professor of Agricultural & Rural Economics, Ryukoku University Senior Advisor (Public Administration, Local Governance), JICA	JICA OSAKA (Seminar Room 9)	JICA OSAKA 072-641-6900
19	TUE	10:00-17:00	P Proposal Plan Report	"	"	"	"
20	WED	10:00-16:00	L Japan's ODA and JICA / JICA Experience of Participatory Development Projects	Ms. Kinashi Mr. Kawamura	Program Officer, Program Team 1, JICA Osaka Professor of Agricultural & Rural Economics, Ryukoku University	"	"
21	THU	10:00-16:00	L Administrative Organization and Decentralization in Japan	Mr. Tomino	Professor, Faculty of Law, Ryukoku University	"	"
22	FRI	10:00-17:00	L/O Participatory Development and Local Governance in Sri Lanka and Japan: An Exploratory Study / Courtesy Call on President of Ryukoku University	Mr. Nakamura Mr. Wakahara	Research Fellow, Ryukoku University President, Ryukoku University	Ryukoku University	"
23	SAT		N				"
24	SUN		N				"
3rd Week Weekly Target: Method for Participatory Development (PCM)							
1/25	MON	10:00-16:00	W Theory and Practice of Logical Framework (PCM) 1	Mr. Takeda	Senior Advisor (Participatory Development / Development Administration), JICA	JICA OSAKA (Seminar Room 13)	JICA OSAKA 072-641-6900
26	TUE	10:00-16:00	W Theory and Practice of Logical Framework (PCM) 2	"	"	"	"
27	WED	10:00-16:00	W Theory and Practice of Logical Framework (PCM) 3	"	"	JICA OSAKA (Seminar Room 9)	"
28	THU	10:00-16:00	W Theory and Practice of Logical Framework (PCM) 4	"	"	"	"
29	FRI	10:00-16:00	W/P Integration1 (Action Plan and PCM)	Mr. Kawamura Mr. Kawakita	Professor of Agricultural & Rural Economics, Ryukoku University Senior Advisor (Public Administration, Local Governance), JICA	"	"
30	SAT		N				"
31	SUN		N				"
4th Week Weekly Target: Local Government Administration and Stakeholders in Local Development							
2/1	MON	10:00-16:00	L Paradigm Shift in Local Government and Local Development	Mr. Shiraishi	Professor, Faculty of Law, Ryukoku University	JICA OSAKA (Seminar Room 9)	JICA OSAKA 072-641-6900
2	TUE	10:00-16:00	L Local Government and Structural Building of Community Revitalization	Mr. Kawakita	Senior Advisor (Public Administration, Local Governance), JICA	"	"
3	WED	10:00-16:00	O Case Study 1 (Local Resources for Rural Development) Ohara, Kyoto City	Mr. Watanabe Mr. Kawamura	Representative, Village Trust Tsukuda Farm Professor of Agricultural & Rural Economics, Ryukoku University	Ohara, Kyoto City, Kyoto Prefecture	"
4	THU	10:00-16:00	O Case Study 2 (Local Resources for Industrial Development) AM: Ryukoku Extension Center PM: Kyoto Prefectural Technology Center for Small and Medium Enterprises	Mr. Kawamura Mr. Miyake	Professor of Agricultural & Rural Economics, Ryukoku University Kyoto Prefectural Technology Center for SME	AM: Ryukoku Extension Center (REC), Ohtsu City, Shiga Prefecture PM: Kyoto Prefectural Technology Center for Small and Medium Enterprises, Kyoto City, Kyoto Prefecture	"
5	FRI	10:00-16:00	D Integration Workshop 2 (Linkage between Local Resources and Local Development)	Mr. Kawamura Mr. Kawakita	Professor of Agricultural & Rural Economics, Ryukoku University Senior Advisor (Public Administration, Local Governance), JICA	JICA OSAKA (Seminar Room9)	"
6	SAT		N				"
7	SUN		N				"
5th Week Weekly Target : Participatory Development and Local Government in Urban Area							
2/8	MON	10:00-16:00	L Urban Development and Local Government	Ms. Tsuchiyama	Associate Professor, Faculty of Law, Ryukoku University	JICA OSAKA (Seminar Room 9)	JICA OSAKA 072-641-6900
9	TUE	10:00-16:00	L Administration of Kyoto City for Urban Development (Structure / Policy / Finance)	Kyoto City	General Planning Bureau, Kyoto City	Kyoto City Government Office, Kyoto City, Kyoto Prefecture	"

ANNEX II

Date	Time	Type	Subject	Lecturer or Organization		Place to Visit	Place to Stay & Phone No.	
				Name	Position & Organization			
10	WED	10:00-16:00	O	Case Study 3 (Development of Local Industry) AM: Advanced Software Technology & Mechatronics Research Institute of Kyoto (ASTEM RI / KYOTO) PM: Kyoto Museum of Traditional Crafts	"	Kyoto City, Kyoto Prefecture	Kyoto City, Kyoto Prefecture	"
11	THU	10:00-16:00	O	Case Study4 (Community Based Social Activity) AM: Kyoto Municipal Activity Center PM: Miyako Ecology Center	"	"	Kyoto City, Kyoto Prefecture	"
12	FRI	10:00-16:00	D	Integration Workshop 3 (Local Government and Urban Development)	Mr. Kawamura Mr. Kawakita	Professor of Agricultural & Rural Economics, Ryukoku University Senior Advisor (Public Administration, Local Governance), JICA	JICA OSAKA (Seminar Room9)	"
13	SAT		N					"
14	SUN		N					"
6th Week Weekly Target : Participatory Development and Local Government in Rural Area								
15	MON	10:00-16:00	L	Changes in Rural Communities and Regional Agriculture	Mr. Kawamura	Professor of Agricultural & Rural Economics, Ryukoku University	JICA OSAKA (Seminar Room 9)	JICA OSAKA 072-641-6900
16	TUE	10:00-16:00	L	Framework of Agriculture, Forestry and Fishery-Administration (Structure, Policy and Finance) and Agricultural/Rural Development in Kyoto Prefecture	Kyoto Pref.	Agricultural Administration Division, Department of Agriculture, Forestry and fisheries, Kyoto Prefectural Government	Kyoto Prefectural Office, Kyoto City, Kyoto Prefecture	"
17	WED	10:00-16:00	T	Case Study 5 (Rural Development Administration) Himuro-no-sato, Municipal Rural Environmental Park, Bio-ecology Center and Agricultural Public Corporation (agri products processing)	Kyoto Pref.	Agricultural Administration Division, Department of Agriculture, Forestry and fisheries, Kyoto Prefectural Government	Nantan City, Kyoto Prefecture	Hotel AYABE 0773-40-5100
18	THU	10:00-16:00	T	Case Study 6 (Agricultural Development Administration) Kyoto Prefectural Agriculture, Forestry and Fisheries Technology Center, Nantan Extension Center, Green House for Kyoto Brand Vegetable MIZUNA	"	"	AM: Kameoka City PM: Nantan City, Kyoto Prefecture	JICA OSAKA 072-641-6900
19	FRI	10:00-16:00	D	Integration Workshop 4 (Local Government and Rural Development)	Mr. Kawamura Mr. Kawakita	Professor of Agricultural & Rural Economics, Ryukoku University Senior Advisor (Public Administration, Local Governance), JICA	JICA OSAKA (Seminar Room 9)	"
20	SAT		N					"
21	SUN		N					"
7th Week Weekly Target: Theory for Participatory Local Societal Development (PLSD)								
2/22	MON	10:00-16:00	L	Theory & Method for Participatory Local Social Development (PLSD) 1	Mr. Kawamura	Professor of Agricultural & Rural Economics, Ryukoku University	JICA OSAKA (Seminar Room 9)	JICA OSAKA 072-641-6900
23	TUE	10:00-16:00	L	Theory & Method for Participatory Local Social Development (PLSD) 2	"	"	"	"
24	WED	10:00-16:00	O	Case Study 7 (Typical Rice Farming Village) Visit to Chuzu Town	"	"	Chuzu Town, Shiga Prefecture	"
25	THU	10:00-16:00	L	Theory & Method for Participatory Local Social Development (PLSD) 3	"	"	JICA OSAKA (Seminar Room 9)	"
26	FRI		T	Case Study 8 Hiroshima: Visit to NPO Community Leader Hull Pong / NPO ANT- Hiroshima	Mr. Kawaguchi Ms. Watanabe	NPO Community Leader Hull Pong NPO ANT- Hiroshima	Hiroshima City, Hiroshima Prefecture	JICA Hiroshima 082-421-6300
27	SAT		T	Case Study 9 Hiroshima: Visit to Peace Memorial Museum & Park, Experience Sharing with A-bomb Survivor	Mr. Hosokawa	Survivor of Atomic Bomb	Hiroshima Peace Memorial Museum & Park	JICA OSAKA 072-641-6900
28	SUN		N					"
8th Week Weekly Target : Program Integration								
3/1	MON	10:00-16:00	W	Final Report Workshop Drawing up Action Plan (Individual Academic Counseling / Guidance)	Mr. Kawamura Mr. Kawakita	Professor of Agricultural & Rural Economics, Ryukoku University Senior Advisor (Public Administration, Local Governance), JICA	JICA OSAKA (Seminar Room 9 &10)	JICA OSAKA 072-641-6900
2	TUE	10:00-16:00	W	"	"	"	"	"
3	WED	10:00-16:00	W	"	"	"	"	"
4	THU	9:00-17:00	P	Final Report Presentation	"	"	JICA OSAKA (Seminar Room 9)	"
5	FRI	10:00-13:00		Evaluation Meeting / Closing Ceremony / Farewell Party	JICA	JICA	JICA OSAKA	"
6	SAT		N	Departure				

Organizations Concerned:

Osaka International Centre (JICA OSAKA)
Japan International Cooperation Agency (JICA)
25-1, Nishi Toyokawa-cho, Ibaraki City
Osaka 567-0058
TEL : 072-641-6900
FAX : 072-641-6915

Ryukoku University
67 Tsukamoto-cho, Fukakusa, Fushimi-ku, Kyoto 612-8577
TEL: 075-645-8421
FAX: 075-645-8421

Japan International Cooperation Center (JICE)
Ibaraki-Daidoseimei Bldg. 2F, 5-10,
Nishi Ekimae-cho, Ibaraki City
Osaka 567-0032
TEL : 072-624-8686
FAX : 072-624-8681

For Your Reference

JICA and Capacity Development

The key concept underpinning JICA operations since its establishment in 1974 has been the conviction that “capacity development” is central to the socioeconomic development of any country, regardless of the specific operational scheme one may be undertaking, i.e. expert assignments, development projects, development study projects, training programs, JOCV programs, etc.

Within this wide range of programs, Training Programs have long occupied an important place in JICA operations. Conducted in Japan, they provide partner countries with opportunities to acquire practical knowledge accumulated in Japanese society. Participants dispatched by partner countries might find useful knowledge and re-create their own knowledge for enhancement of their own capacity or that of the organization and society to which they belong.

About 460 pre-organized programs cover a wide range of professional fields, ranging from education, health, infrastructure, energy, trade and finance, to agriculture, rural development, gender mainstreaming, and environmental protection. A variety of programs are being customized to address the specific needs of different target organizations, such as policy-making organizations, service provision organizations, as well as research and academic institutions. Some programs are organized to target a certain group of countries with similar developmental challenges.

Japanese Development Experience

Japan was the first non-Western country to successfully modernize its society and industrialize its economy. At the core of this process, which started more than 140 years ago, was the “*adopt and adapt*” concept by which a wide range of appropriate skills and knowledge have been imported from developed countries; these skills and knowledge have been adapted and/or improved using local skills, knowledge and initiatives. They finally became internalized in Japanese society to suit its local needs and conditions.

From engineering technology to production management methods, most of the know-how that has enabled Japan to become what it is today has emanated from this “*adoption and adaptation*” process, which, of course, has been accompanied by countless failures and errors behind the success stories. We presume that such experiences, both successful and unsuccessful, will be useful to our partners who are trying to address the challenges currently faced by developing countries.

However, it is rather challenging to share with our partners this whole body of Japan’s developmental experience. This difficulty has to do, in part, with the challenge of explaining a body of “tacit knowledge,” a type of knowledge that cannot fully be expressed in words or numbers. Adding to this difficulty are the social and cultural systems of Japan that vastly differ from those of other Western industrialized countries, and hence still remain unfamiliar to many partner countries. Simply stated, coming to Japan might be one way of overcoming such a cultural gap.

JICA, therefore, would like to invite as many leaders of partner countries as possible to come and visit us, to mingle with the Japanese people, and witness the advantages as well as the disadvantages of Japanese systems, so that integration of their findings might help them reach their developmental objectives.

Welcome to JICA Osaka

Osaka International Centre of Japan International Cooperation Agency (JICA Osaka) extends a hearty welcome to all JICA participants.

1. Location of the centre in the Kansai region

JICA Osaka is located in Ibaraki City, Osaka prefecture, in the heart of the Kansai region. Ibaraki lies close to the ancient cultural centers of Kyoto and Nara, and to the commercial, industrial and economic center of Osaka, and the city of Kobe.

2. Orientation Programme & Japanese Language Course

(1) The four days after arrival at JICA Osaka are dedicated to an orientation programme, during which participants are introduced to JICA Osaka and its facilities, attend lectures on Japan's economy, society and culture, and participate in an international exchange programme with local communities.

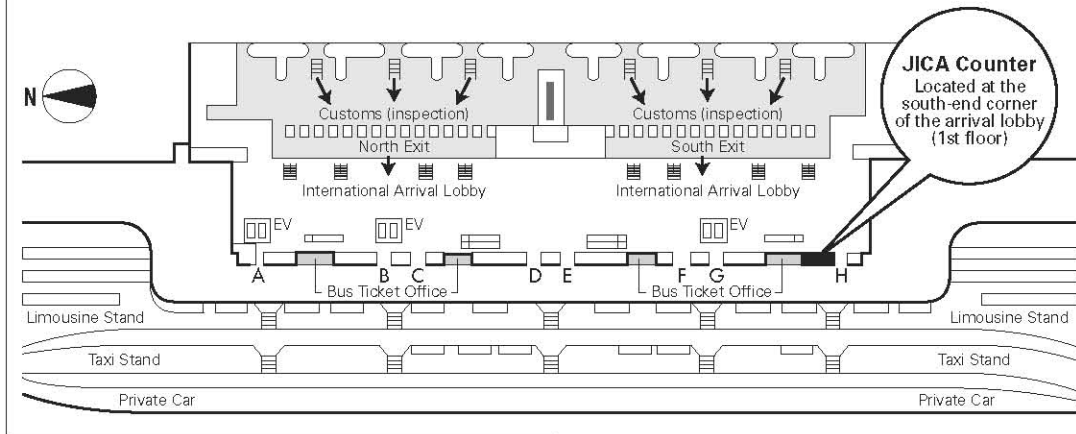
(2) It is desirable that participants acquire basic Japanese daily conversation for use in communication with training institution personnel and in other situations outside the scope of their technical training. JICA Osaka therefore offers:

- 1 an intensive Japanese language course as an integral part of the training programme in designated courses
- 2 an optional Japanese language course held in the evenings

3. Weekend Recreational Programme

Occasionally, at the weekends, JICA Osaka, in concert with community groups, organizes a programme of recreational activities and exchange events, including introductions to flower arrangement, tea ceremony, kimono wearing, handicrafts, and folk dancing, and visits to Japanese homes.

Map of JICA Counter in Kansai International Airport (KIX)



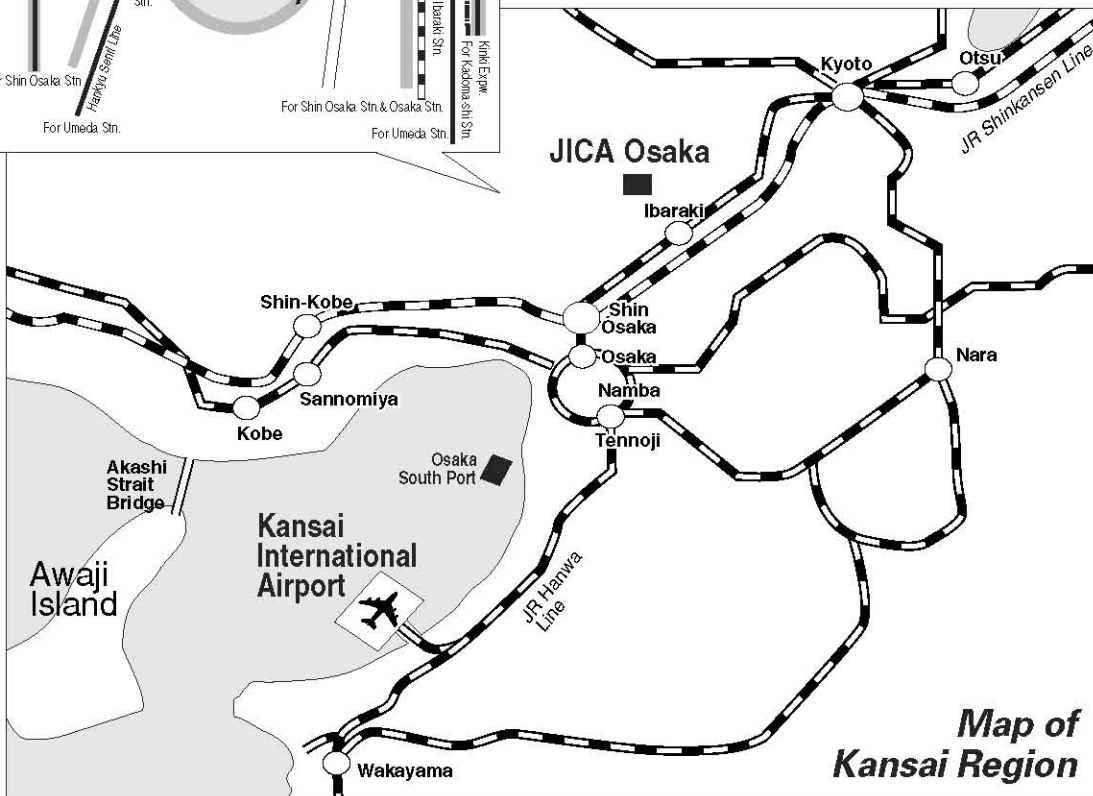
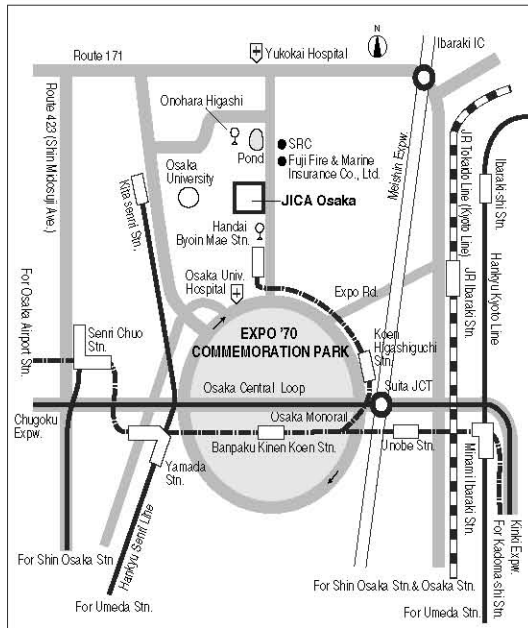
Upon arrival, participants should follow the procedure below:

1. Ride on Wing Shuttle (red elevated tram).
2. Pass through Immigration.
3. Collect baggage and pass through Customs Inspection.
4. Go to the JICA Counter located at the south-end corner of the arrival lobby (1st floor).

The staff at the JICA Counter will provide participants with a limousine bus ticket to Osaka Station (alight at Hotel New Hankyu).

At Osaka Station, a representative of the travel agency designated by JICA will meet the participant. The participant will be taken to JICA Osaka by taxi (with a taxi ticket), which takes approximately 30 minutes.

Map of the JICA Osaka Vicinity



Map of Kansai Region



CORRESPONDENCE

For enquiries and further information, please contact the JICA office or the Embassy of Japan. Further, address correspondence to:

JICA Osaka International Center (JICA Osaka)

Address: 25-1 Nishi-Toyokawa-cho, Ibaraki-shi, Osaka 567-0058, Japan

TEL : 81-72-641-6900 FAX : 81-72-641-6910